



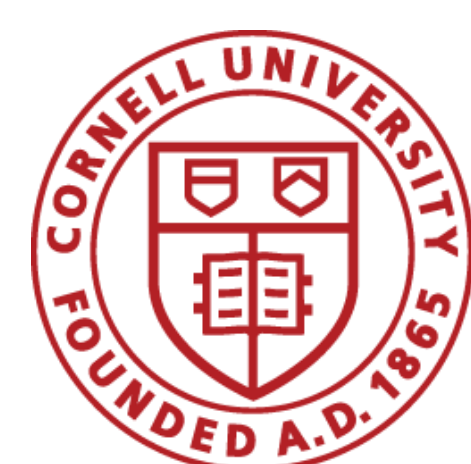
Join a multi-disciplinary team of faculty, staff and students working with farmers and farm advisors to investigate key performance indicators that can help advance dairy farm sustainability.



Connect with university staff, farmers and industry leaders in the area of sustainability, and get involved in outreach opportunities.



Participate in visits and extension activities with and for New York dairy farms.



Cornell University

Join the Cornell University

Nutrient Management Spear Program

and participate in the development of sustainability key performance indicators for the dairy industry of New York State.



Interested?

Email Dr. Quirine Ketterings at qmk2@cornell.edu

No prior experience required

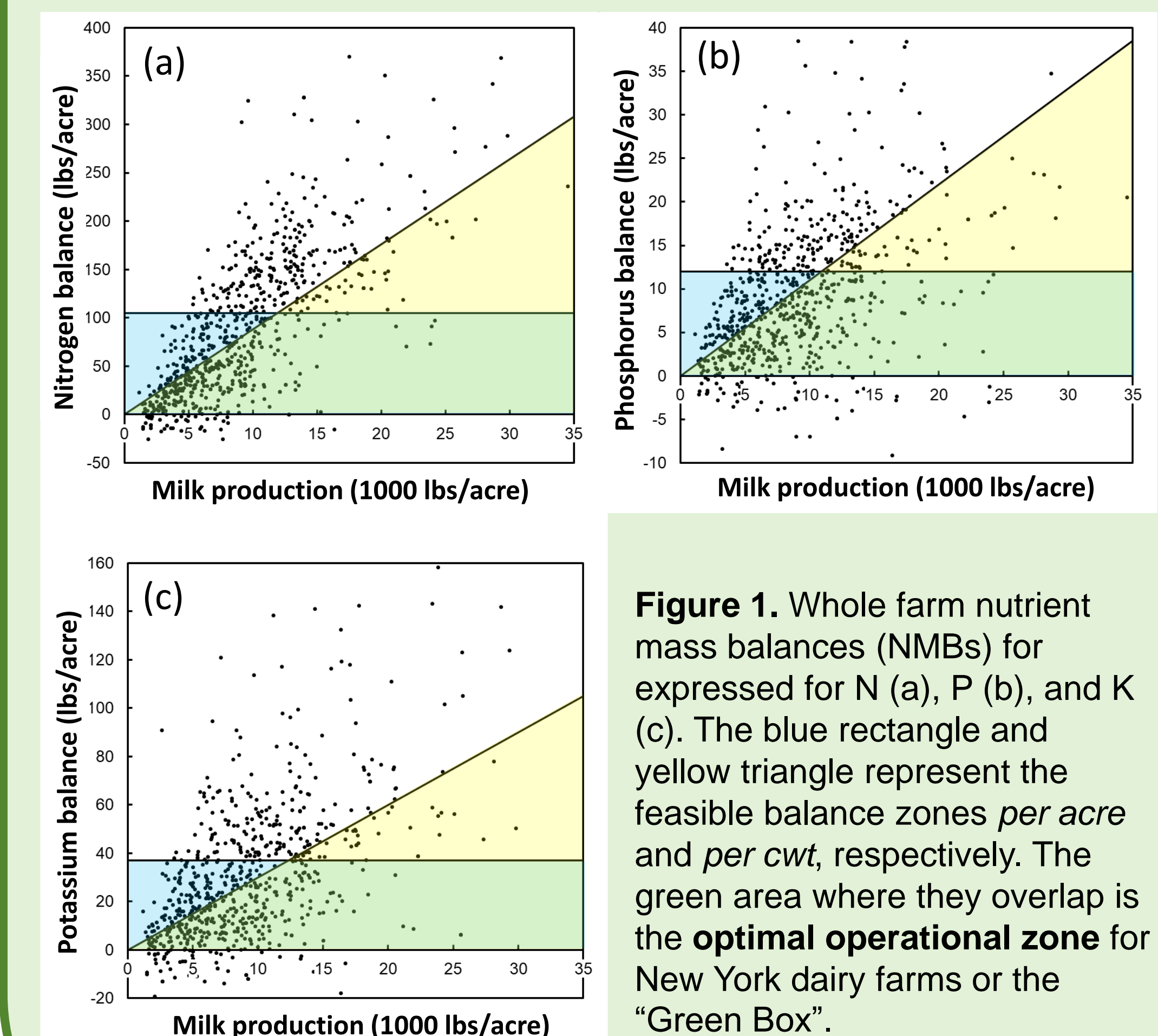
Applicants should be highly motivated, detail oriented, and have an interest in dairy system sustainability.



Nutrient
Management
Spear Program



Assist in data collection and analysis related to nutrient management practices, greenhouse gas emissions and biodiversity.



Contribute to the development of novel tools and computer software.

Project funded by

Chobani